



274 Expansion Project

Dental Managed Care Plan Workgroup

Meeting # 2

November 6, 2018



INTRODUCTIONS



Agenda/ Meeting Objectives

- Questions/Updates to the Companion guide from previous meeting
- Reminder of Timelines and Transition Planning
- Next Steps
- Open Discussion Forum
- Project Resources and Contact Information



274 Companion Guide

- Taxonomy
- Site or Location Assistive Indicator



Taxonomy

- Multiple instances of Taxonomy may be entered at the Group, Site and Detail level. Enter the Primary Taxonomy first, followed by others, if available.

				Date
2120CA	LQ	Provider Group's Area of Specialization		Situational - Multiple instances may be provided
	LQ01	Code/List Qualifier Code	68	Healthcare Provider Taxonomy
	LQ02	Industry Code		Required - Taxonomy Code



Updates to Site or Location Assistive Indicator

2100DA	CRC	Site Assistive Aid Information		Situational – Multiple instances may be provided. If no Site Assistive Aid information is present, do not send.
	CRC01	Provider Characteristics and Resources	DJ	
	CRC03, CRC04, CRC05, CRC06, CRC07	Site or Location Assistive Aid Indicator	1R, 1S, 1T, 1U, 1V, 1Y, 2E, 2S	<p>Use any combination of the following codes with the exception of the distance to public transportation codes as noted below:</p> <p>1R – This location is handicapped accessible (ADA Compliant)</p> <p>1Y – This location has Telecommunication Device for the Deaf (TDD) equipment</p> <p>2E – Laboratory services/testing is provided at this location</p> <p>2S – X-rays are provided at this location</p> <p>Enter only one of the following distance to public transportation codes.</p> <p>1S – This location is less than 1 block from public transportation (less than 0.25 miles)</p> <p>1T – This location is less than 5 block from public transportation (between 0.25 and 0.5 miles)</p> <p>1U – This location is less than 1 mile from public transportation (Between 0.5 and 1.0 miles)</p> <p>1V – This location is 1 or more miles from public transportation</p>



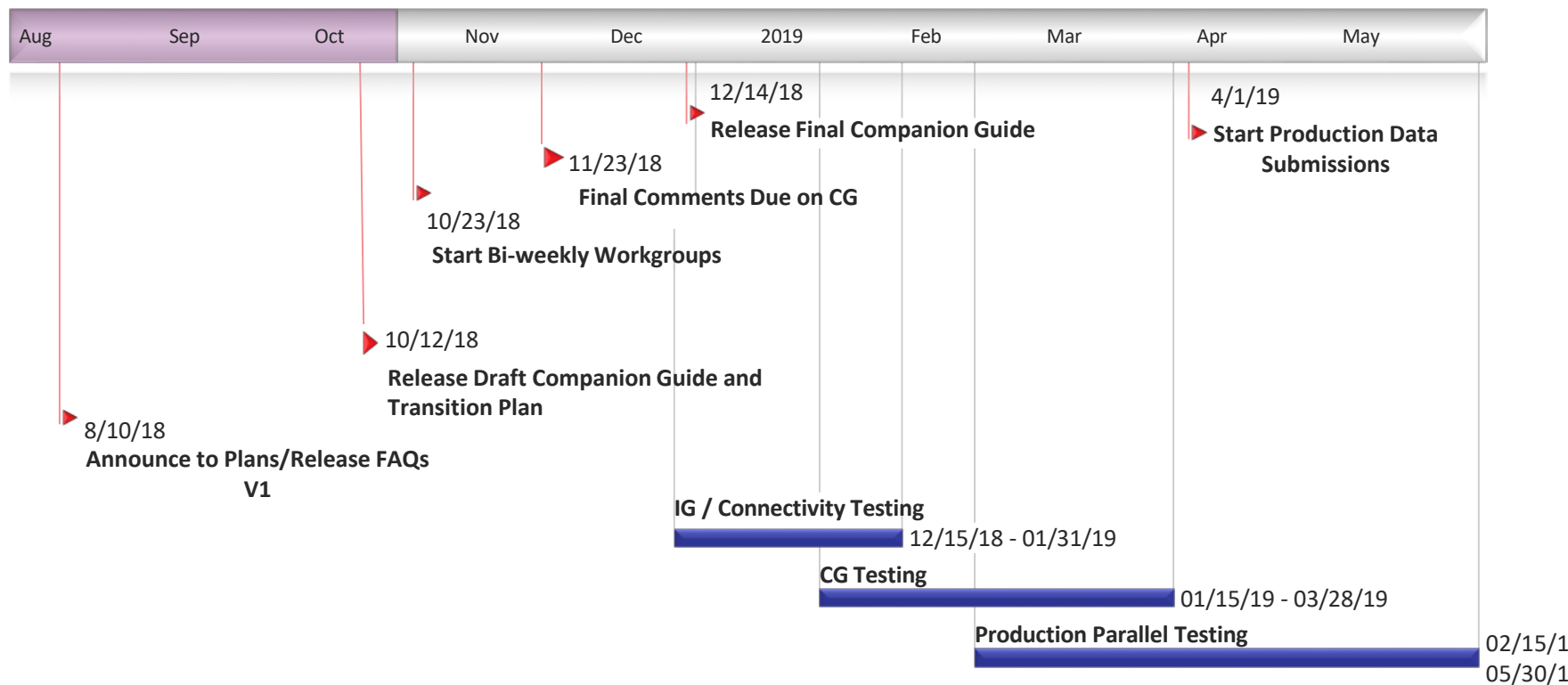
Action: Looking for plan feedback on proposed distance associated with block



274 Transition Planning



Timelines





Next Steps

Activity	Timeframes	Status/Updates
1. Release <u>Draft</u> Companion Guide (CG)	By 10/12/18	Released to plans on 10/11/18
2. Release Transition Plan (TP)	By 10/12/18	Released to plans on 10/11/18
3. Bi-weekly workgroups with DMC plans	2018 schedule: Tue, 11/20, 10:30-12 Tue, 12/4, 10:30-12 Tue, 12/18, 10:30-12	Final CG and TP edits/comments due NLT than Friday 11/23. Please forward questions when you have them prior to each workgroup meeting
4. Release Final CG based on plan feedback	By 12/14/18	DHCS release All Plan Letter after final release of CG
5. Phase 1 – Implementation Guide (IG) Testing	Start by 12/14/18	
6. Phase 2 – CG Testing	Start by 01/15/19	
7. Phase 3 – Production Parallel Testing	Start by 2/15/19	
8. Begin production data submissions	Start by 4/1/19	



Agenda Items for Next Workgroup

- Plan information sharing and lessons learned with 274 Implementation – Healthnet?
- DHCS to provide more specifics on testing scenarios

Plan Follow-ups next meeting:

1. Plans provide feedback on proposed distances for 'Distance to Public Transportation' indicators
2. Updates to PACES SFTP account holders for the 274 data
3. Final comments/edits to the 274 Companion Guide due by 11/23.



Open Discussion Forum





Project Resources and Contact Information

- **274 FAQs and Webinar PPTs on DHCS Medi-Cal Dental Website:** <https://www.dhcs.ca.gov/services/Pages/DentalManagedCare.aspx>
- **Where to submit questions:** dmcdeliverables@dhcs.ca.gov
Please ensure the subject line includes the following: “274 Provider Network Data”.
FAQs will be updated periodically based on plan submitted questions.
- **Bi-Weekly Workgroup Meeting Schedule (2018):**
 - Tuesday, November, 20th – 10:30-12
 - Tuesday, December, 4th – 10:30-12
 - Tuesday, December, 18th – 10:30-12