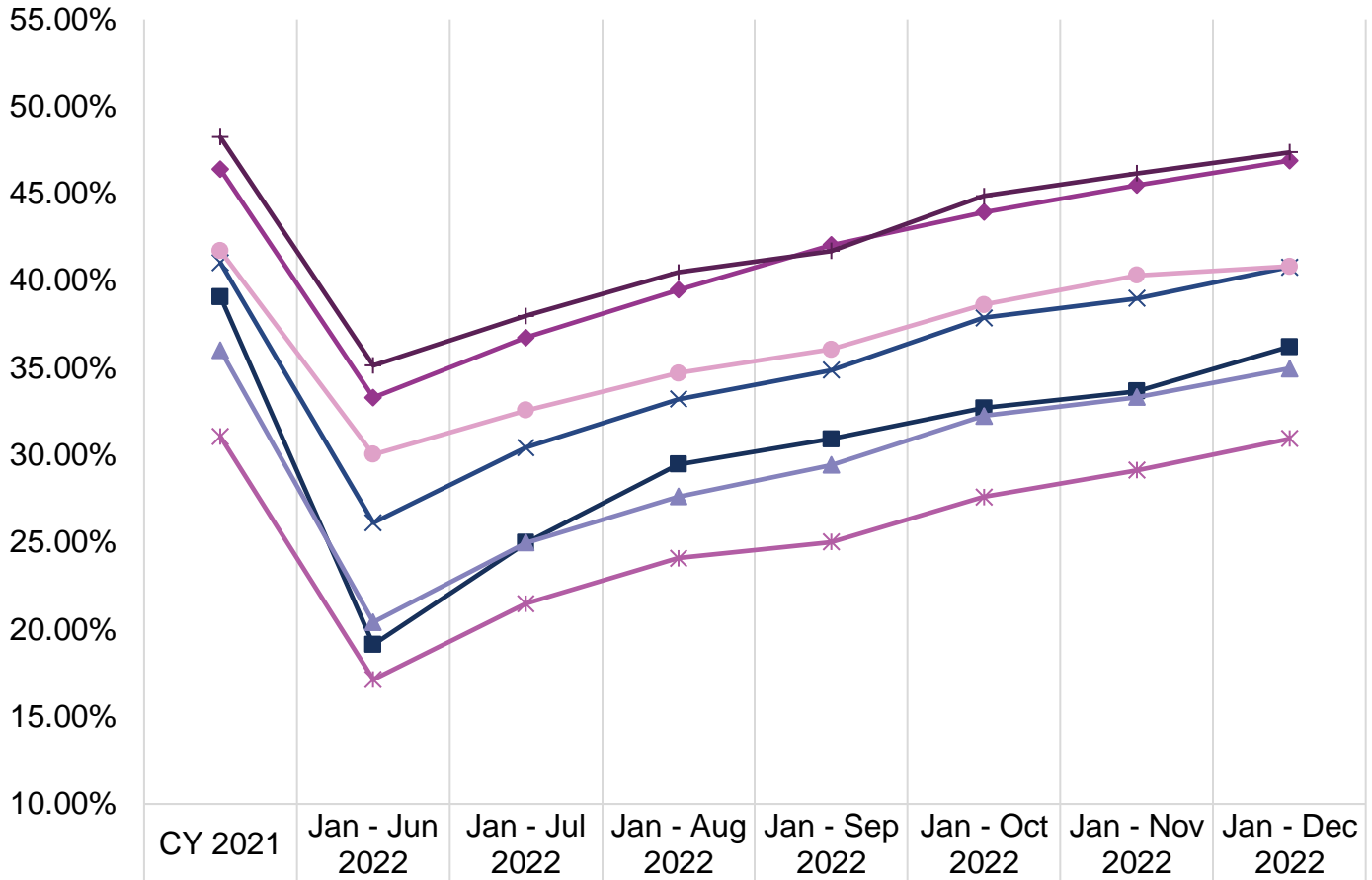




# Dental Fee-For-Service (FFS) and Dental Managed Care (DMC) Performance Fact Sheet (February 2023)

## Dental Utilization in Children Ages 0-20

### Annual Dental Visits



◆ FFS	46.40%	33.31%	36.74%	39.48%	42.05%	43.95%	45.49%	46.90%
■ Access LA	39.09%	19.14%	24.98%	29.47%	30.93%	32.71%	33.68%	36.22%
▲ Health Net LA	36.04%	20.43%	24.99%	27.63%	29.44%	32.26%	33.33%	34.98%
✕ Liberty LA	41.04%	26.13%	30.44%	33.22%	34.88%	37.88%	38.99%	40.78%
* Access Sac	31.07%	17.14%	21.50%	24.09%	25.03%	27.61%	29.14%	30.96%
● Health Net Sac	41.72%	30.04%	32.57%	34.71%	36.06%	38.63%	40.32%	40.82%
◆ Liberty Sac	48.24%	35.15%	37.99%	40.49%	41.71%	44.87%	46.18%	47.37%

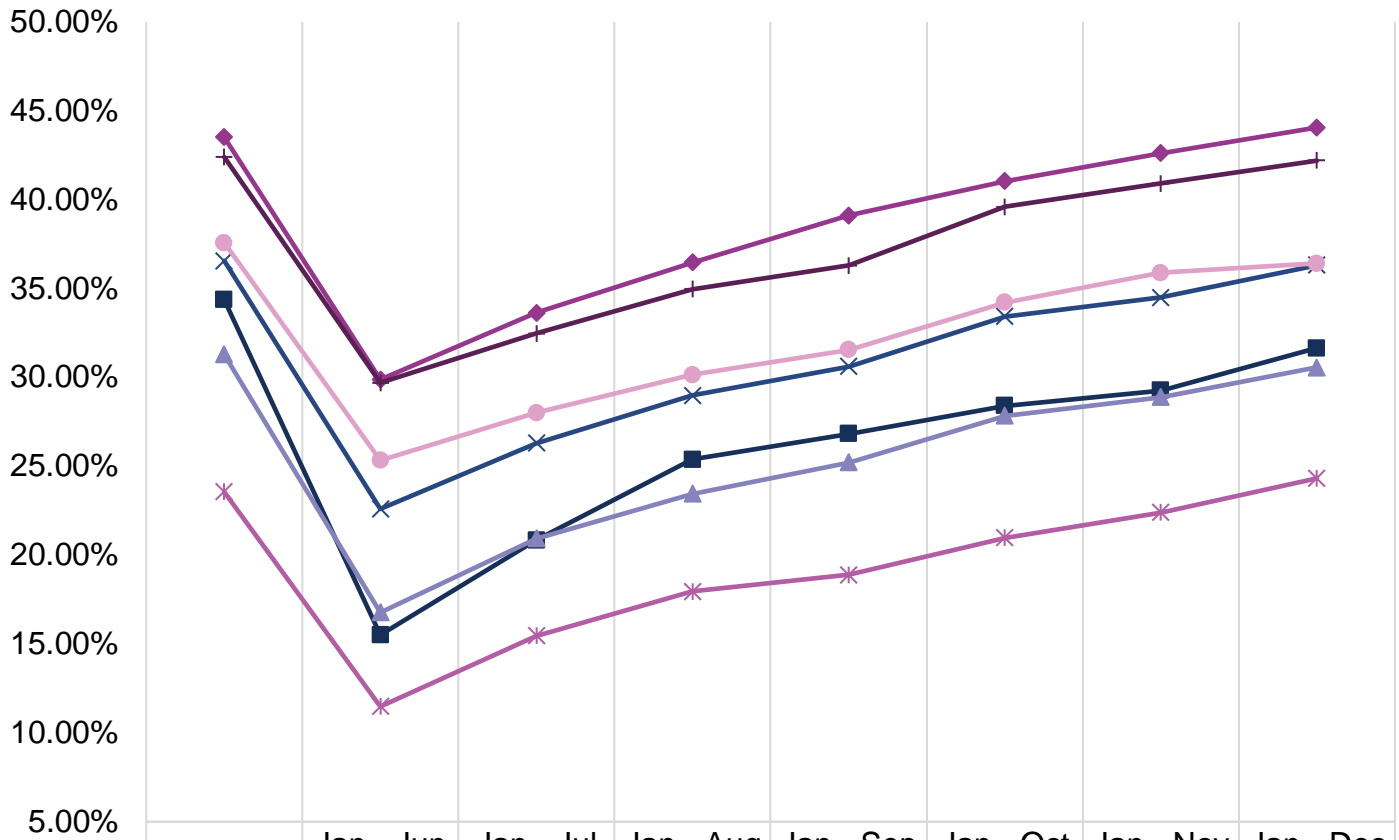
**Utilization is calculated based on:**

- **Numerator:** Number of members in the denominator who received any dental service (Current Dental Terminology (CDT) D0100-D9999 or Current Procedural Terminology (CPT) 99188), including dental encounters at safety net clinics (SNCs).
- **Denominator:** Number of members with at least 90 days continuous enrollment in the same plan during the measurement period.



# Dental Fee-For-Service (FFS) and Dental Managed Care (DMC) Performance Fact Sheet (February 2023)

## Preventive Services



	CY 2021	Jan - Jun 2022	Jan - Jul 2022	Jan - Aug 2022	Jan - Sep 2022	Jan - Oct 2022	Jan - Nov 2022	Jan - Dec 2022
◆ FFS	43.52%	29.88%	33.63%	36.47%	39.11%	41.05%	42.62%	44.06%
■ Access LA	34.36%	15.51%	20.85%	25.39%	26.83%	28.40%	29.27%	31.64%
▲ Health Net LA	31.28%	16.77%	20.93%	23.45%	25.21%	27.83%	28.89%	30.55%
× Liberty LA	36.56%	22.60%	26.30%	28.98%	30.61%	33.43%	34.50%	36.31%
* Access Sac	23.56%	11.48%	15.45%	17.96%	18.90%	20.98%	22.40%	24.32%
● Health Net Sac	37.58%	25.33%	28.00%	30.14%	31.55%	34.21%	35.89%	36.41%
+ Liberty Sac	42.40%	29.70%	32.47%	34.96%	36.29%	39.59%	40.92%	42.21%

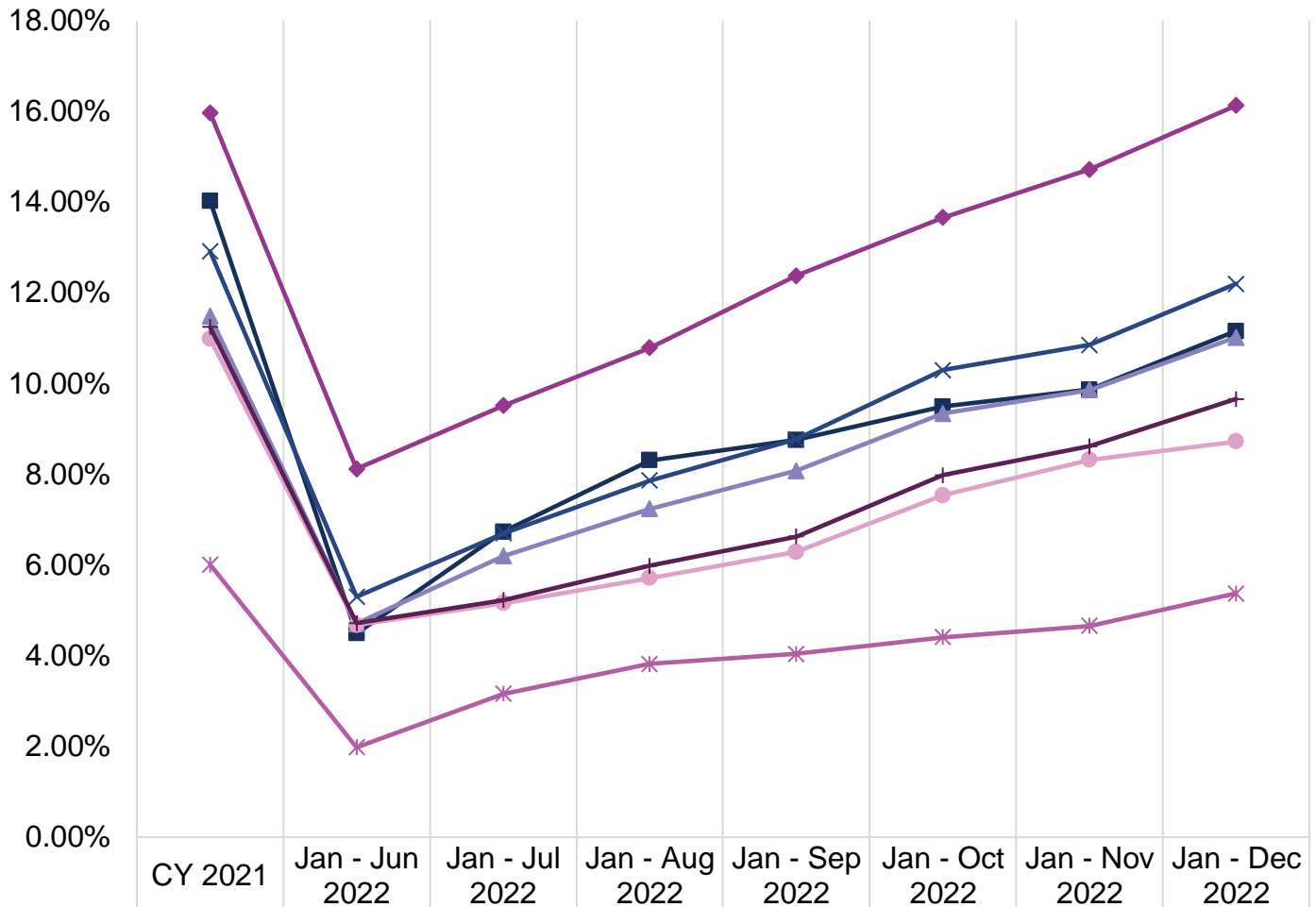
**Utilization is calculated based on:**

- **Numerator:** Number of members in the denominator who received any preventive dental service (CDT D1000-D1999 or CPT Code 99188), including dental encounters at SNCs.
- **Denominator:** Number of members with at least 90 days continuous enrollment in the same plan during the measurement period.



# Dental Fee-For-Service (FFS) and Dental Managed Care (DMC) Performance Fact Sheet (February 2023)

## Sealant for Ages 6-9



	CY 2021	Jan - Jun 2022	Jan - Jul 2022	Jan - Aug 2022	Jan - Sep 2022	Jan - Oct 2022	Jan - Nov 2022	Jan - Dec 2022
FFS	15.97%	8.12%	9.51%	10.79%	12.38%	13.66%	14.72%	16.13%
Access LA	14.03%	4.49%	6.73%	8.31%	8.76%	9.49%	9.87%	11.16%
Health Net LA	11.48%	4.71%	6.20%	7.24%	8.08%	9.34%	9.86%	11.02%
Liberty LA	12.92%	5.30%	6.70%	7.86%	8.77%	10.30%	10.85%	12.20%
Access Sac	6.01%	1.98%	3.16%	3.82%	4.04%	4.41%	4.66%	5.37%
Health Net Sac	10.99%	4.68%	5.16%	5.71%	6.29%	7.54%	8.32%	8.72%
Liberty Sac	11.25%	4.72%	5.23%	5.98%	6.63%	7.98%	8.62%	9.66%

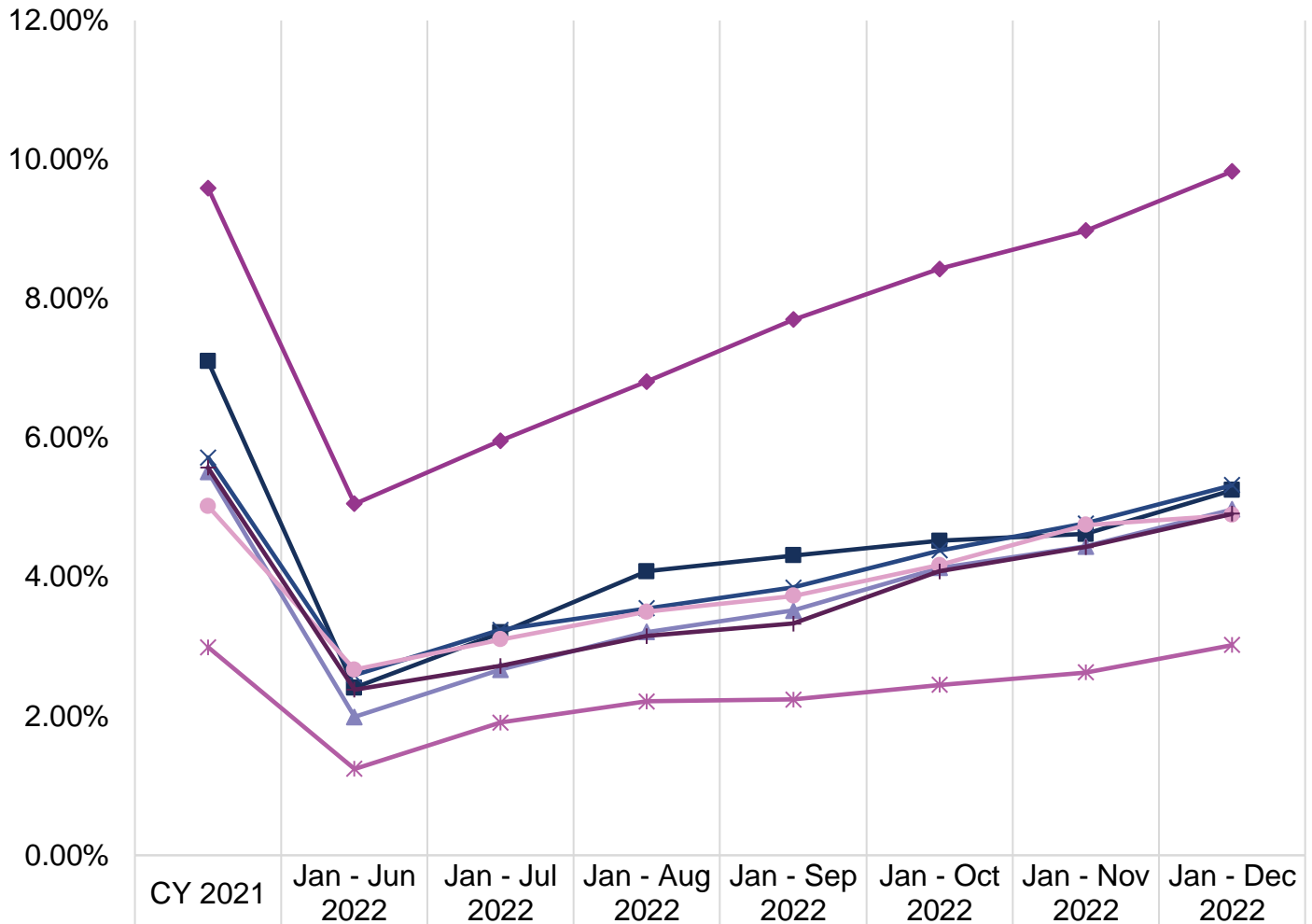
**Utilization is calculated based on:**

- **Numerator:** Number of members in the denominator who received a dental sealant (D1351) on a permanent first molar, including dental encounters at SNCs.
- **Denominator:** Number of members ages 6-9 with at least 90 days continuous enrollment in the same plan during the measurement period.



# Dental Fee-For-Service (FFS) and Dental Managed Care (DMC) Performance Fact Sheet (February 2023)

## Sealant for Ages 10-14



◆ FFS	9.59%	5.05%	5.96%	6.81%	7.70%	8.43%	8.98%	9.83%
■ Access LA	7.10%	2.41%	3.20%	4.08%	4.31%	4.52%	4.62%	5.25%
▲ Health Net LA	5.51%	1.99%	2.67%	3.21%	3.52%	4.13%	4.44%	4.97%
✕ Liberty LA	5.72%	2.59%	3.24%	3.55%	3.85%	4.38%	4.77%	5.32%
* Access Sac	2.99%	1.24%	1.91%	2.21%	2.24%	2.45%	2.63%	3.02%
● Health Net Sac	5.02%	2.67%	3.10%	3.50%	3.73%	4.17%	4.75%	4.89%
✚ Liberty Sac	5.57%	2.38%	2.72%	3.15%	3.33%	4.08%	4.43%	4.91%

**Utilization is calculated based on:**

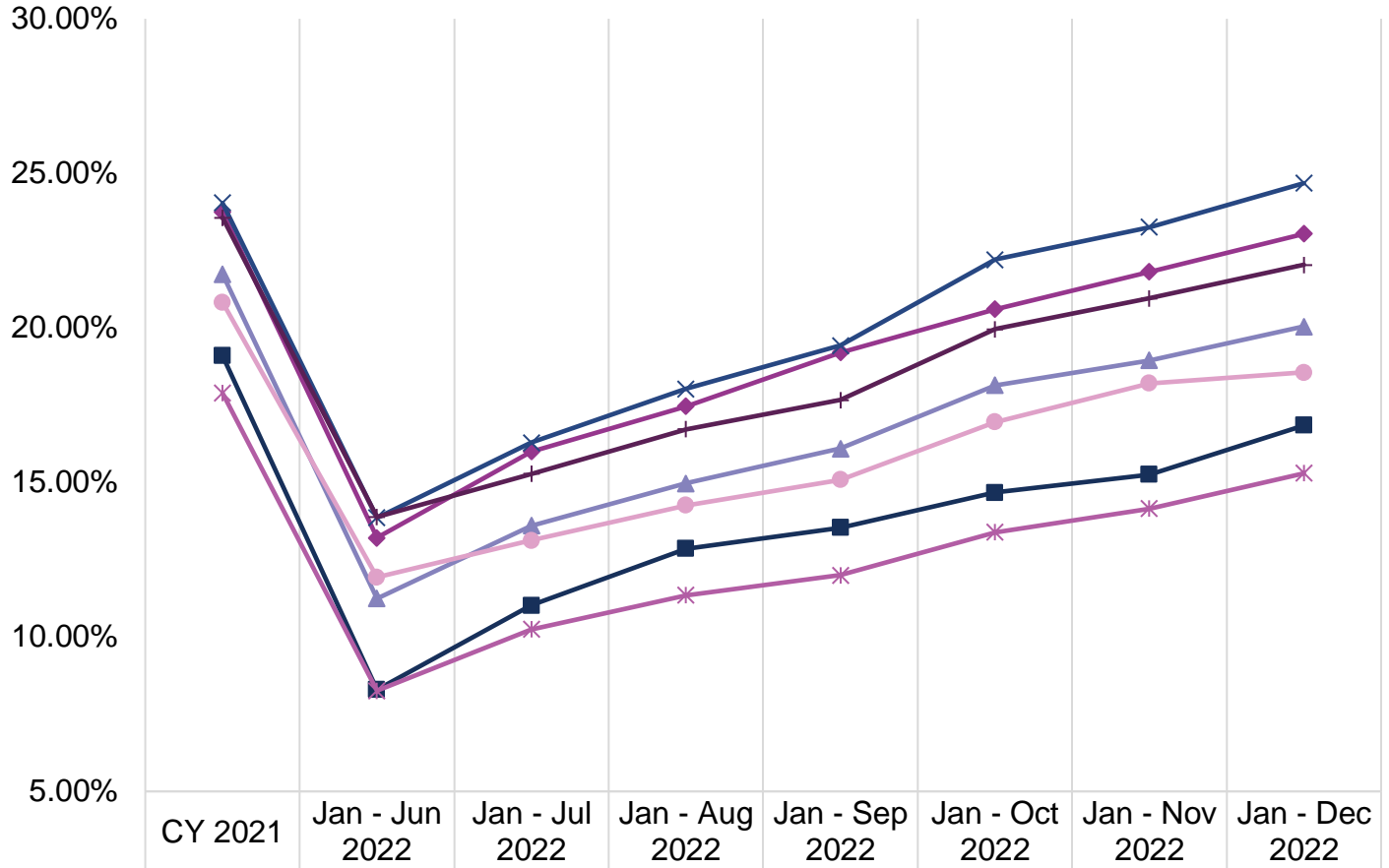
- **Numerator:** Number of members in the denominator who received a dental sealant (D1351) on a permanent second molar, including dental encounters at SNCs.
- **Denominator:** Number of members ages 10-14 with at least 90 days continuous enrollment in the same plan during the measurement period.



# Dental Fee-For-Service (FFS) and Dental Managed Care (DMC) Performance Fact Sheet (February 2023)

## Dental Utilization in Adults Ages 21+

### Annual Dental Visits



◆ FFS	23.75%	13.21%	16.00%	17.46%	19.20%	20.60%	21.81%	23.05%
■ Access LA	19.10%	8.29%	11.02%	12.86%	13.53%	14.67%	15.25%	16.85%
▲ Health Net LA	21.74%	11.24%	13.60%	14.97%	16.09%	18.14%	18.95%	20.04%
✕ Liberty LA	24.04%	13.85%	16.28%	18.02%	19.43%	22.21%	23.26%	24.68%
* Access Sac	17.89%	8.26%	10.24%	11.35%	12.00%	13.39%	14.15%	15.30%
● Health Net Sac	20.83%	11.93%	13.12%	14.26%	15.08%	16.95%	18.21%	18.55%
+ Liberty Sac	23.57%	13.88%	15.27%	16.72%	17.66%	19.96%	20.95%	22.04%

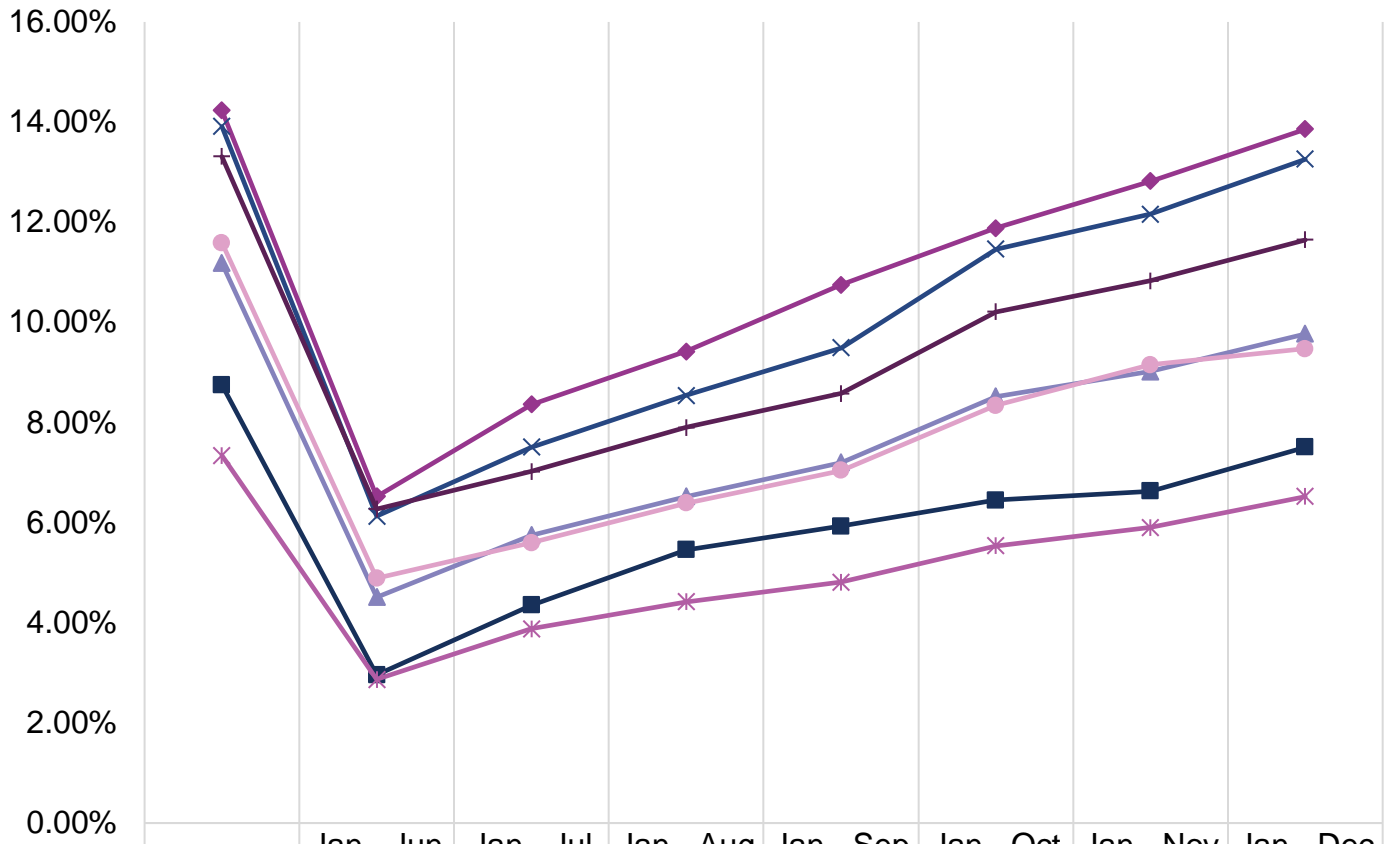
#### Utilization is calculated based on:

- **Numerator:** Number of members in the denominator who received any dental service (CDT D0100-D9999), including dental encounters at SNCs.
- **Denominator:** Number of members with at least 90 days continuous enrollment in the same plan during the measurement period.



# Dental Fee-For-Service (FFS) and Dental Managed Care (DMC) Performance Fact Sheet (February 2023)

## Preventive Services



	CY 2021	Jan - Jun 2022	Jan - Jul 2022	Jan - Aug 2022	Jan - Sep 2022	Jan - Oct 2022	Jan - Nov 2022	Jan - Dec 2022
◆ FFS	14.23%	6.52%	8.36%	9.42%	10.75%	11.88%	12.82%	13.86%
■ Access LA	8.75%	2.96%	4.35%	5.46%	5.93%	6.45%	6.63%	7.51%
▲ Health Net LA	11.18%	4.51%	5.75%	6.52%	7.20%	8.52%	9.02%	9.77%
✕ Liberty LA	13.91%	6.13%	7.51%	8.54%	9.49%	11.46%	12.16%	13.26%
* Access Sac	7.34%	2.87%	3.88%	4.42%	4.81%	5.54%	5.90%	6.52%
● Health Net Sac	11.59%	4.89%	5.60%	6.39%	7.04%	8.34%	9.15%	9.47%
+ Liberty Sac	13.31%	6.27%	7.02%	7.90%	8.58%	10.21%	10.83%	11.65%

**Utilization is calculated based on:**

- **Numerator:** Number of members in the denominator who received any preventive dental service (CDT D1000-D1999), including dental encounters at SNCs.
- **Denominator:** Number of members with at least 90 days continuous enrollment in the same plan during the measurement period.



## Dental Fee-For-Service (FFS) and Dental Managed Care (DMC) Performance Fact Sheet (February 2023)

**Data Source for all the Charts:** FFS claims processed through the California Dental Medicaid Management Information System (CD-MMIS); DMC claims received via encounter data submission from the DMC plans; CPT 99188 and SNC claims processed through the California Medicaid Management Information System (CA-MMIS) as of February 7, 2023.

### Rendering Provider Data December 2022

#### *Los Angeles and surrounding counties*

Category	Count	Percentage
FFS Only	5,814	83%
FFS and DMC	1,063	15%
DMC Only	114	2%
Total Unduplicated Providers	6,991	100%

#### *Sacramento and surrounding counties*

Category	Count	Percentage
FFS Only	138	29%
FFS and DMC	236	50%
DMC Only	96	21%
Total Unduplicated Providers	470	100%

**Data Source:** Count of providers enrolled in December 2022 who also provided services within the last year in dental offices or SNCs within Los Angeles, Sacramento, and surrounding counties (Orange, Riverside, San Bernardino, Ventura, Yolo, Placer, and El Dorado). FFS provider counts provided by the Administrative Services Organization and DMC provider counts provided by DMC plans. Providers are matched with claims for dates of services between January 1, 2022, and December 31, 2022, as of February 6, 2023, to identify the county the providers served.