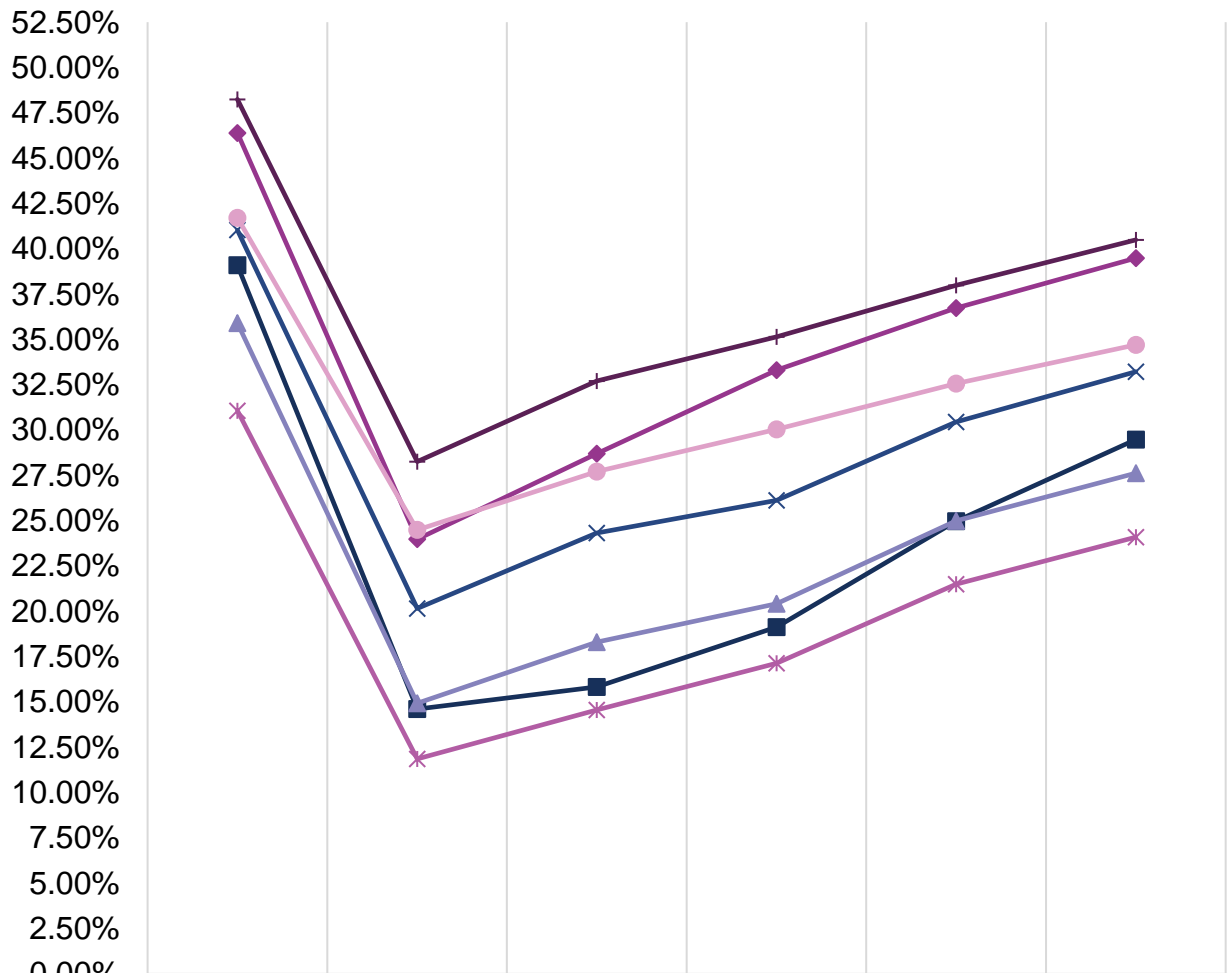




# Dental Fee-For-Service (FFS) and Dental Managed Care (DMC) Performance Fact Sheet (October 2022)

## Dental Utilization in Children Ages 0-20

### Annual Dental Visits



	CY 2021	Jan - Apr 2022	Jan - May 2022	Jan - Jun 2022	Jan - Jul 2022	Jan - Aug 2022
◆ FFS	46.39%	23.98%	28.70%	33.31%	36.74%	39.48%
■ Access LA	39.09%	14.61%	15.84%	19.14%	24.98%	29.47%
▲ Health Net LA	35.90%	14.93%	18.31%	20.43%	24.99%	27.63%
✕ Liberty LA	41.03%	20.16%	24.33%	26.13%	30.44%	33.22%
* Access Sac	31.07%	11.86%	14.56%	17.14%	21.50%	24.09%
● Health Net Sac	41.71%	24.49%	27.71%	30.04%	32.57%	34.71%
⊕ Liberty Sac	48.24%	28.26%	32.71%	35.15%	37.99%	40.49%

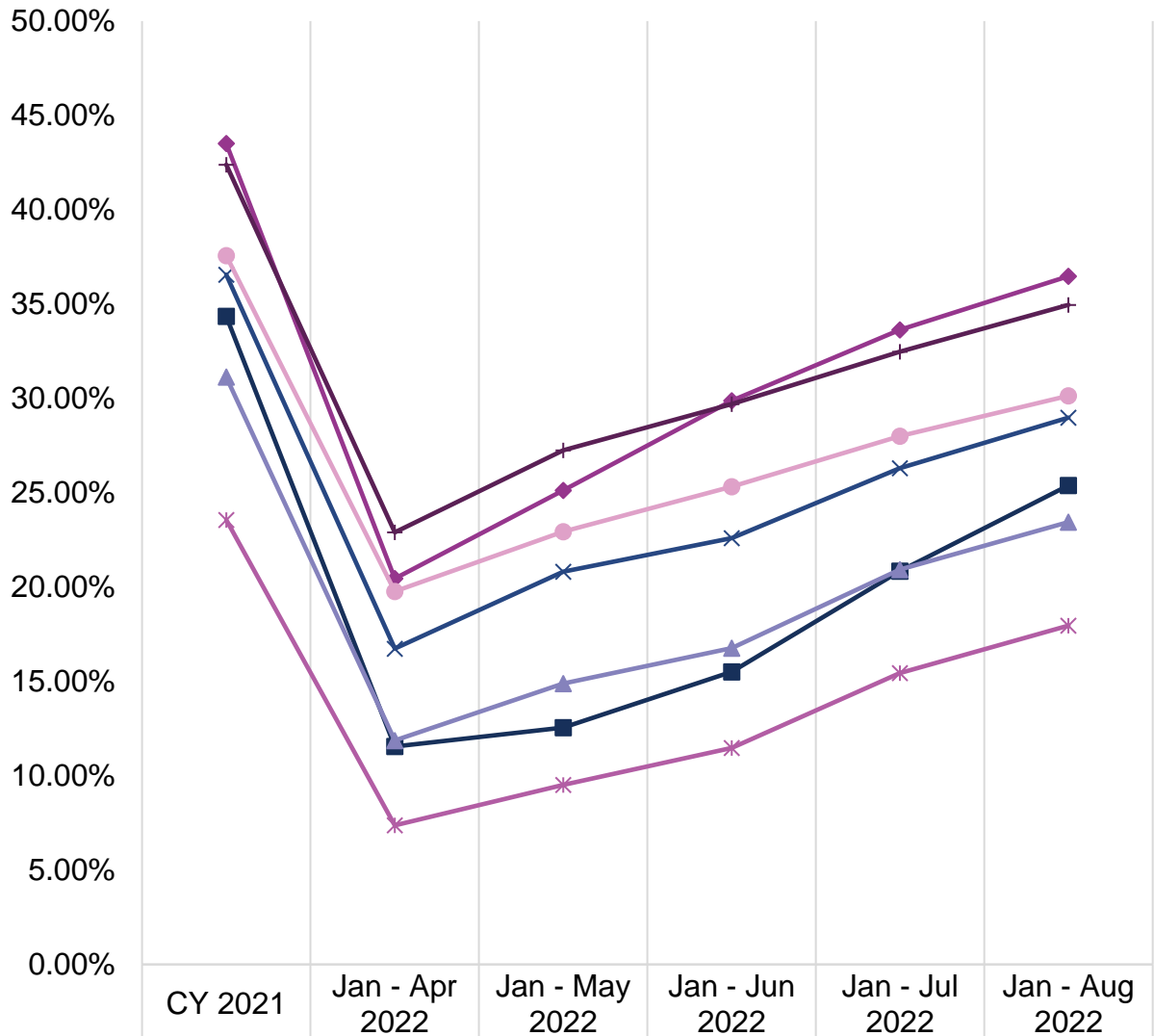
#### Utilization is calculated based on:

- **Numerator:** Number of members in the denominator who received any dental service (Current Dental Terminology (CDT) D0100-D9999 or Current Procedural Terminology (CPT) 99188), including dental encounters at safety net clinics (SNCs).
- **Denominator:** Number of members with at least 90 days continuous enrollment in the same plan during the measurement period.



# Dental Fee-For-Service (FFS) and Dental Managed Care (DMC) Performance Fact Sheet (October 2022)

## Preventive Services



	CY 2021	Jan - Apr 2022	Jan - May 2022	Jan - Jun 2022	Jan - Jul 2022	Jan - Aug 2022
◆ FFS	43.51%	20.45%	25.12%	29.88%	33.63%	36.47%
■ Access LA	34.35%	11.55%	12.56%	15.51%	20.85%	25.39%
▲ Health Net LA	31.13%	11.87%	14.88%	16.77%	20.93%	23.45%
× Liberty LA	36.56%	16.74%	20.82%	22.60%	26.30%	28.98%
* Access Sac	23.56%	7.37%	9.51%	11.48%	15.45%	17.96%
● Health Net Sac	37.57%	19.77%	22.94%	25.33%	28.00%	30.14%
+ Liberty Sac	42.39%	22.90%	27.25%	29.70%	32.47%	34.96%

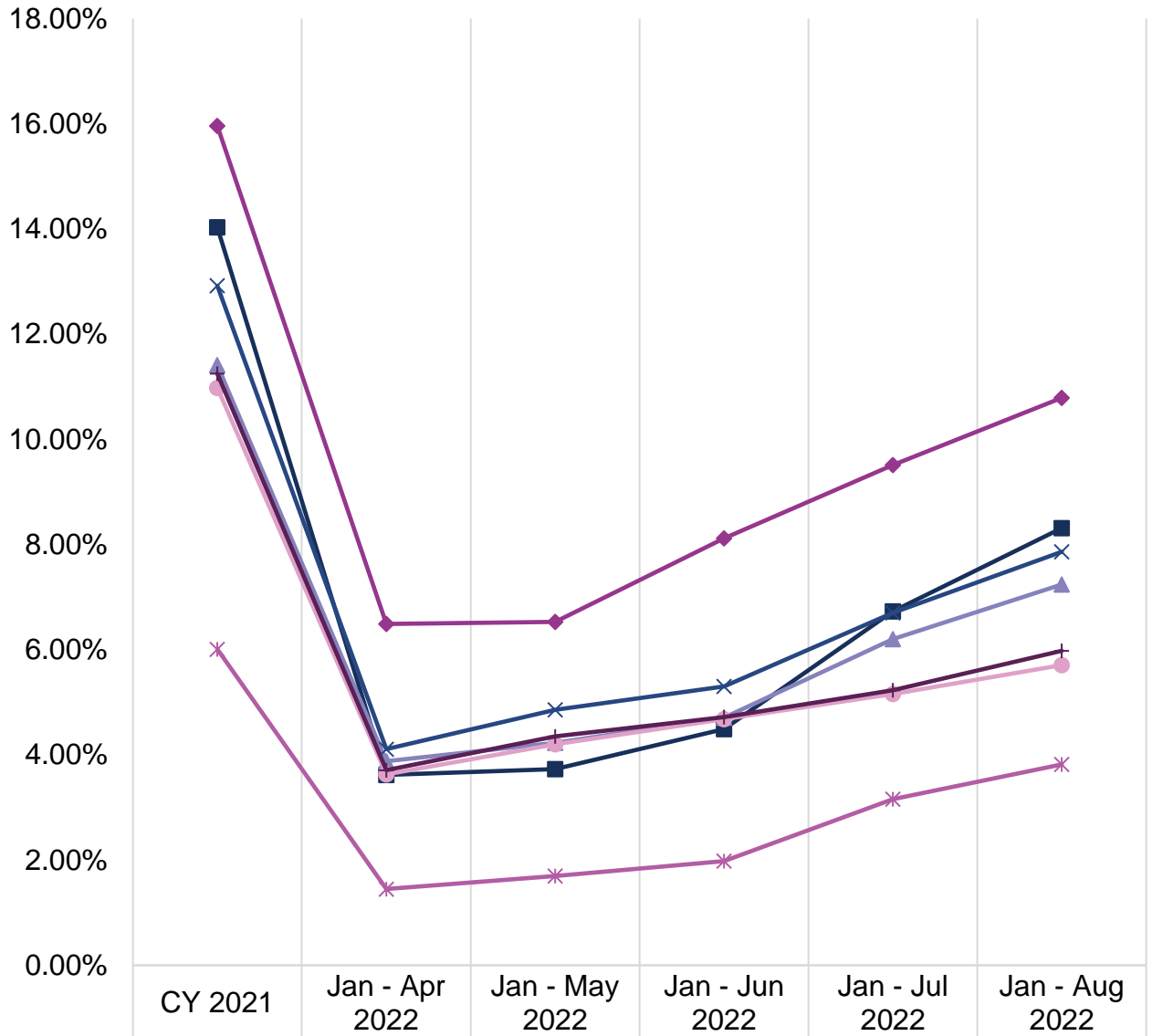
**Utilization is calculated based on:**

- **Numerator:** Number of members in the denominator who received any preventive dental service (CDT D1000-D1999 or CPT Code 99188), including dental encounters at SNCs.
- **Denominator:** Number of members with at least 90 days continuous enrollment in the same plan during the measurement period.



## Dental Fee-For-Service (FFS) and Dental Managed Care (DMC) Performance Fact Sheet (October 2022)

### Sealant for Ages 6-9



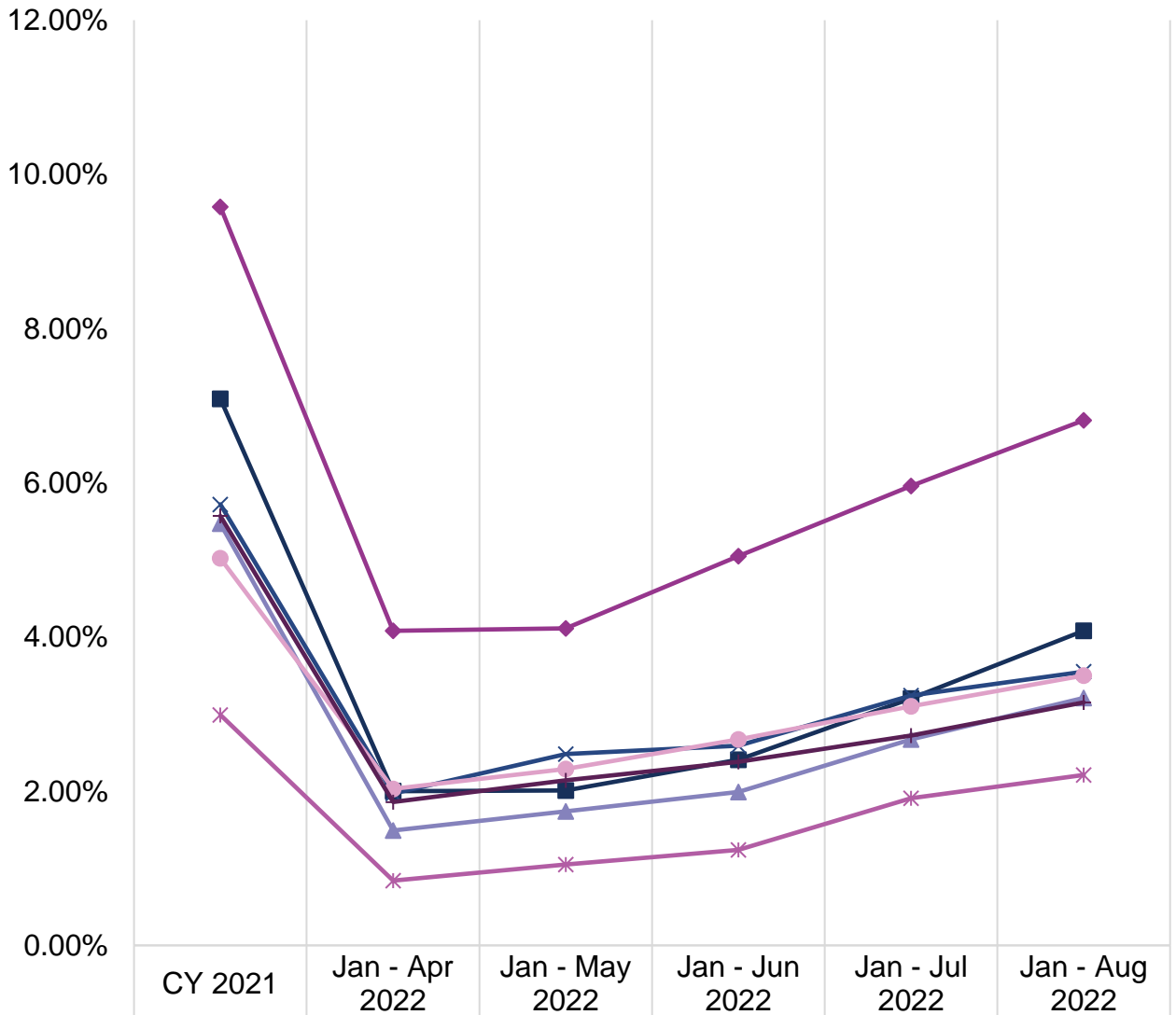
**Utilization is calculated based on:**

- **Numerator:** Number of members in the denominator who received a dental sealant (D1351) on a permanent first molar, including dental encounters at SNCs.
- **Denominator:** Number of members ages 6-9 with at least 90 days continuous enrollment in the same plan during the measurement period.



# Dental Fee-For-Service (FFS) and Dental Managed Care (DMC) Performance Fact Sheet (October 2022)

## Sealant for Ages 10-14



◆ FFS	9.58%	4.08%	4.11%	5.05%	5.96%	6.81%
■ Access LA	7.09%	2.00%	2.01%	2.41%	3.20%	4.08%
▲ Health Net LA	5.47%	1.49%	1.74%	1.99%	2.67%	3.21%
× Liberty LA	5.72%	1.97%	2.48%	2.59%	3.24%	3.55%
* Access Sac	2.99%	0.84%	1.05%	1.24%	1.91%	2.21%
● Health Net Sac	5.02%	2.03%	2.29%	2.67%	3.10%	3.50%
◆ Liberty Sac	5.57%	1.86%	2.14%	2.38%	2.72%	3.15%

**Utilization is calculated based on:**

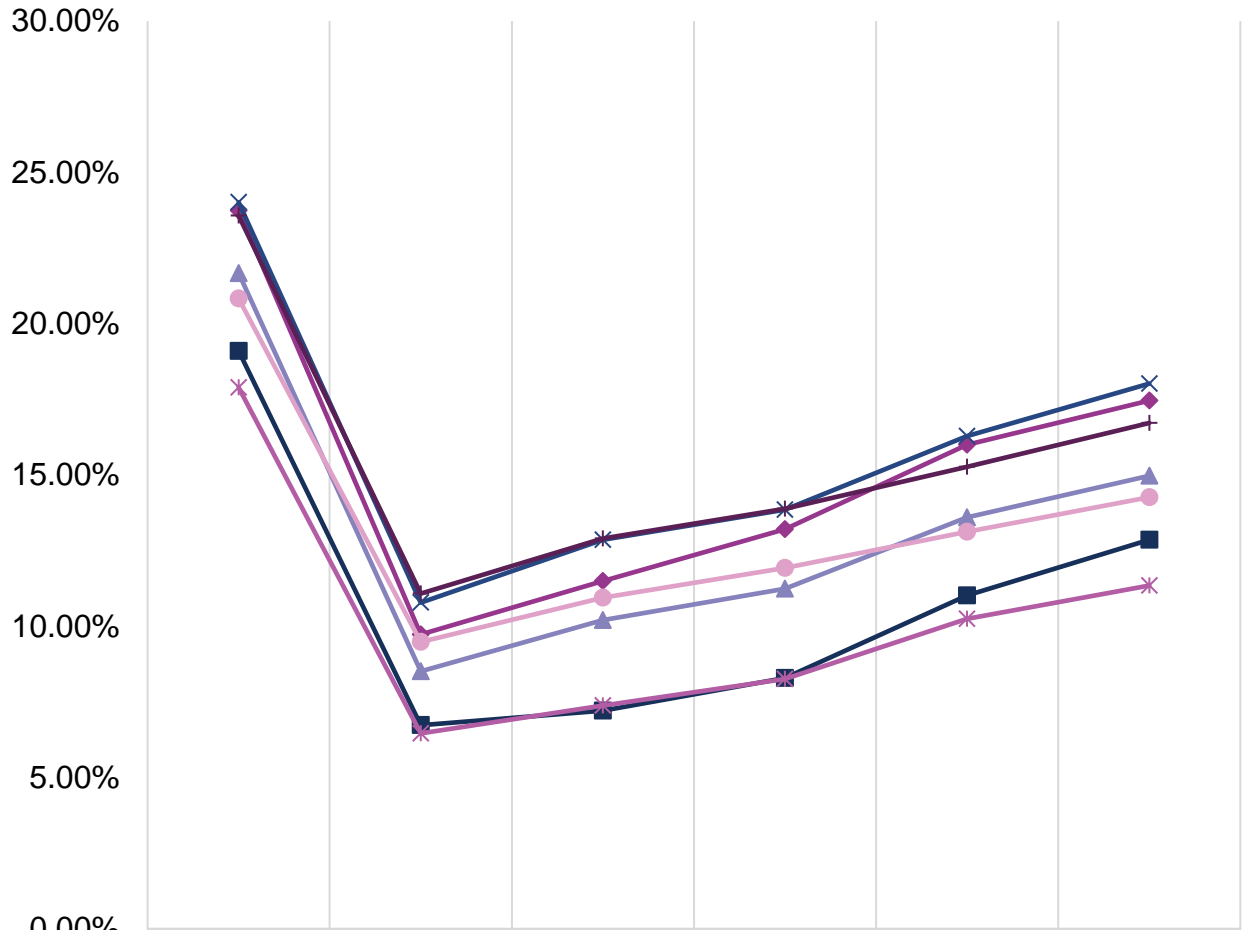
- **Numerator:** Number of members in the denominator who received a dental sealant (D1351) on a permanent second molar, including dental encounters at SNCs.
- **Denominator:** Number of members ages 10-14 with at least 90 days continuous enrollment in the same plan during the measurement period.



# Dental Fee-For-Service (FFS) and Dental Managed Care (DMC) Performance Fact Sheet (October 2022)

## Dental Utilization in Adults Ages 21+

### Annual Dental Visits



	CY 2021	Jan - Apr 2022	Jan - May 2022	Jan - Jun 2022	Jan - Jul 2022	Jan - Aug 2022
◆ FFS	23.74%	9.73%	11.49%	13.21%	16.00%	17.46%
■ Access LA	19.10%	6.73%	7.21%	8.29%	11.02%	12.86%
▲ Health Net LA	21.67%	8.51%	10.20%	11.24%	13.60%	14.97%
✕ Liberty LA	24.01%	10.78%	12.86%	13.85%	16.28%	18.02%
* Access Sac	17.89%	6.46%	7.38%	8.26%	10.24%	11.35%
● Health Net Sac	20.83%	9.48%	10.94%	11.93%	13.12%	14.26%
┆ Liberty Sac	23.57%	11.08%	12.90%	13.88%	15.27%	16.72%

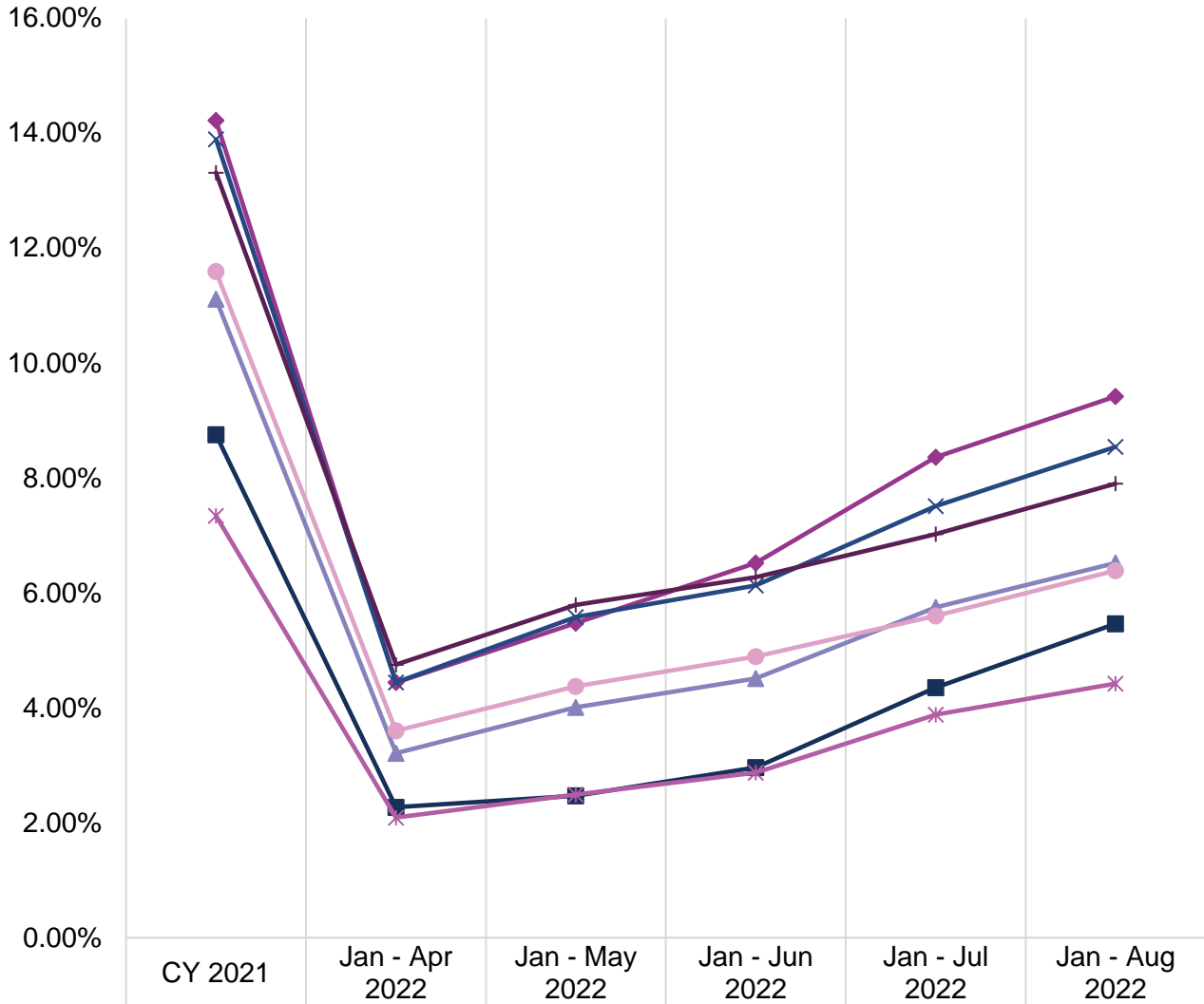
#### Utilization is calculated based on:

- **Numerator:** Number of members in the denominator who received any dental service (CDT D0100-D9999), including dental encounters at SNCs.
- **Denominator:** Number of members with at least 90 days continuous enrollment in the same plan during the measurement period.



# Dental Fee-For-Service (FFS) and Dental Managed Care (DMC) Performance Fact Sheet (October 2022)

## Preventive Services



◆ FFS	14.22%	4.44%	5.47%	6.52%	8.36%	9.42%
■ Access LA	8.75%	2.27%	2.47%	2.96%	4.35%	5.46%
▲ Health Net LA	11.11%	3.21%	4.01%	4.51%	5.75%	6.52%
✕ Liberty LA	13.89%	4.44%	5.58%	6.13%	7.51%	8.54%
* Access Sac	7.34%	2.09%	2.49%	2.87%	3.88%	4.42%
● Health Net Sac	11.59%	3.60%	4.37%	4.89%	5.60%	6.39%
+ Liberty Sac	13.31%	4.75%	5.79%	6.27%	7.02%	7.90%

**Utilization is calculated based on:**

- **Numerator:** Number of members in the denominator who received any preventive dental service (CDT D1000-D1999), including dental encounters at SNCs.
- **Denominator:** Number of members with at least 90 days continuous enrollment in the same plan during the measurement period.



## Dental Fee-For-Service (FFS) and Dental Managed Care (DMC) Performance Fact Sheet (October 2022)

**Data Source for all the Charts:** FFS claims processed through the California Dental Medicaid Management Information System (CD-MMIS); DMC claims received via encounter data submission from the DMC plans; CPT 99188 and SNC claims processed through the California Medicaid Management Information System (CA-MMIS) as of November 30, 2022.

### Rendering Provider Data August 2022

#### *Los Angeles and surrounding counties*

Category	Count	Percentage
FFS Only	5,669	82%
FFS and DMC	1,105	16%
DMC Only	131	2%
Total Unduplicated Providers	6,905	100%

#### *Sacramento and surrounding counties*

Category	Count	Percentage
FFS Only	137	30%
FFS and DMC	229	49%
DMC Only	99	21%
Total Unduplicated Providers	465	100%

**Data Source:** Count of providers enrolled in August 2022, who also provided services within the last one year in dental offices or SNCs within Los Angeles, Sacramento, and surrounding counties (Orange, Riverside, San Bernardino, Ventura, Yolo, Placer, and El Dorado). FFS provider counts provided by the Administrative Services Organization and DMC provider counts are provided by the DMC plans. The providers are matched with claims for dates of services between September 1, 2021 and August 31, 2022, as of October 28, 2022, to identify the county the providers served.