



274 Expansion Project

Dental Managed Care Plan Workgroup

Kick-off – Meeting # 1

October 23, 2018



INTRODUCTIONS



Agenda/ Meeting Objectives

- Overview of key components of the 274 Companion guide
- Overview of 274 Timelines and Transition Planning
- Project Resources and Contact Information
- Next Steps
- Open Discussion Forum



274 Companion Guide



Table of Contents

1	TI Introduction	7
1.1	Overview of HIPAA Legislation	7
1.2	Compliance according to ASC X12.....	8
1.3	Intended Use	8
2	Included ASC X12 Implementation Guides	8
3	Instruction Tables	9
3.1	Transaction Submission.....	9
3.2	Available Transaction Responses.....	10
3.3	Transaction Components.....	10
3.4	File Contents	10
3.5	Submitted Provider Network File Naming Conventions.....	11
3.6	Response File Naming Conventions.....	12
3.7	File Corrections	12
3.8	ISA/IEA.....	15
3.9	GS/GE.....	17
3.10	ST/SE.....	18
3.11	Header.....	19
3.12	Information Source Detail	19
3.13	Information Receiver Detail.....	21
3.14	Network Structure.....	22
3.15	Provider Group Detail	24
3.16	Site Detail	26
3.17	Provider Detail.....	35
4	TI Additional Information	42
	Appendix A – Additional Mapping	43
	Note on data types.....	43
A.1	Site Detail	43
A.2	Provider Detail	45
	Appendix B – Data Definitions	51
B.1	Facility Type (2100DA N201).....	51
B.2	Language Proficiency Indicator (2100DA LUI05)	52
B.3	Site County Code (2100DA N201).....	53
B.4	Ownership Code (2100DB N201)	54
B.5	Type of Licensure (2100EA N202).....	55

Area of focus

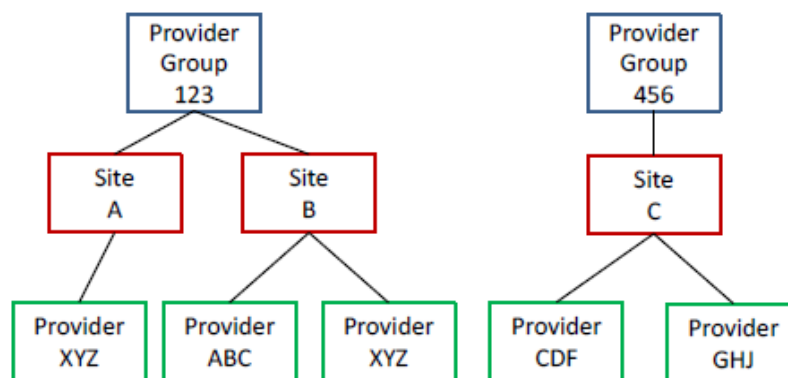


3.14 Network Structure

Plans will describe their provider networks using the following three loops within the 274 Transaction structure:

- Loop 2000C – Provider Group Detail
- Loop 2000D – Site Detail
- Loop 2000E – Provider Detail

Since there are no enforced relationships provided within the 274 transaction, the relationship between a Provider Group and a Site will be described by the position of the relevant 2000D Site loop after the “parent” Provider Group 2000C loop. Similarly, a site to provider relationship will be described by the provider loop being positioned after the relevant site. For example, consider a simple network of two Provider Groups. The first Provider Group (123) has two sites, first site (A) has a single provider, and the second site (B) has two providers associated with it but one of them is the same provider as Site A, and the. The second Provider Group (456) has only one site (C), and there are two providers associated with this site. A diagram describes these entities and their relationship.





Provider Group Detail (2000C)

Element Name
Provider Group Name
NPI
Tax ID Number
Contract Effective Date
Contract Expiration Date
Taxonomy



Site Detail (2000D)

Element Name
Site Name
NPI
Tax ID Number
Facility Type
County Code
Teaching Facility Indicator
Maximum Medi-Cal Members
Count of Medi-Cal Members
Safety Net Provider
Contact Phone Number
Contact Email
Contact Fax
Foreign Languages Spoken
Language Proficiency Indicator
Contract Effective Date
Contract Expiration Date
Office Hours Code
Office Hours Start Time
Office Hours End Time

Element Name
Site or Location Assistive Aid Indicator
Gender Restriction Code
Age Range Minimum
Age Range Maximum
Address Line 1
City
State
Zip Code
Taxonomy
Network Role Code
DEA Number
Owner Name/ Business Name
Owner SSN/TAX ID
Ownership Code
Ownership Percentage



Provider Detail (2000E)

274 Element Name
Last Name
First Name
Middle Name
Suffix
Provider NPI
FTE Equivalent
Provider Gender
Provider Date of Birth
Telehealth Indicator
Provider Social Security
Provider Profit Status
Maximum Medi-Cal Members
Count of Medi-Cal Members
Sees Children Indicator
State License Number
Type of Licensure

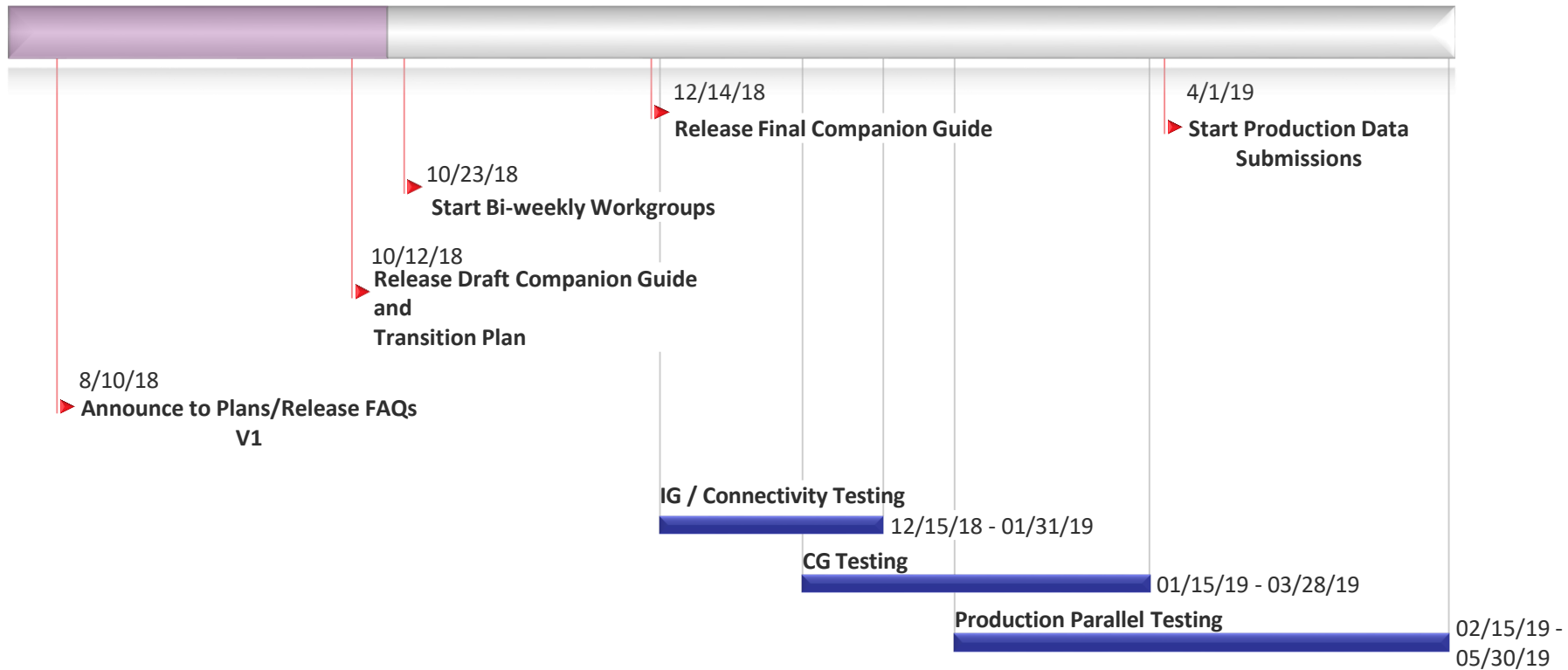
274 Element Name
Licensing State
Type of Board Certification
Provider Email
Affiliated Provider Type
Affiliated Provider NPI
Academic Degree Code
Academic Degree Description
Foreign Languages Spoken
Language Proficiency Indicator
Contract Effective Date
Contract Expiration Date
Taxonomy
Network Role Code
Board Certification Indicator
DEA Number



274 Transition Planning



Timelines





Next Steps

Activity	Timeframes	Status/Updates
1. Release <u>Draft</u> Companion Guide (CG)	By 10/12/18	Released to plans on 10/11/18
2. Release Transition Plan (TP)	By 10/12/18	Released to plans on 10/11/18
3. Bi-weekly workgroups with DMC plans	2018 schedule: Tue, 11/6, 10:30-12 Tue, 11/20, 10:30-12 Tue, 12/4, 10:30-12 Tue, 12/18, 10:30-12	Final CG and TP edits/comments due NLT than Friday 11/23. Please forward questions when you have them prior to each workgroup meeting
4. Release Final CG based on plan feedback	By 12/14/18	DHCS release All Plan Letter after final release of CG
5. Phase 1 – Implementation Guide (IG) Testing	Start by 12/14/18	
6. Phase 2 – CG Testing	Start by 01/15/19	
7. Phase 3 – Production Parallel Testing	Start by 2/15/19	
8. Begin production data submissions	Start by 4/1/19	



Project Resources and Contact Information

- **274 FAQs on DHCS Medi-Cal Dental Website:**
<https://www.dhcs.ca.gov/services/Pages/DentalManagedCare.aspx>
- **Where to submit questions:** dmcdeliverables@dhcs.ca.gov
Please ensure the subject line includes the following: “274 Provider Network Data”.
FAQs will be updated periodically based on plan submitted questions.
- **Bi-Weekly Workgroup Meeting Schedule (2018):**
 - Tuesday, November, 6th – 10:30-12
 - Tuesday, November, 20th – 10:30-12
 - Tuesday, December, 4th – 10:30-12
 - Tuesday, December, 18th – 10:30-12



Open Discussion Forum

