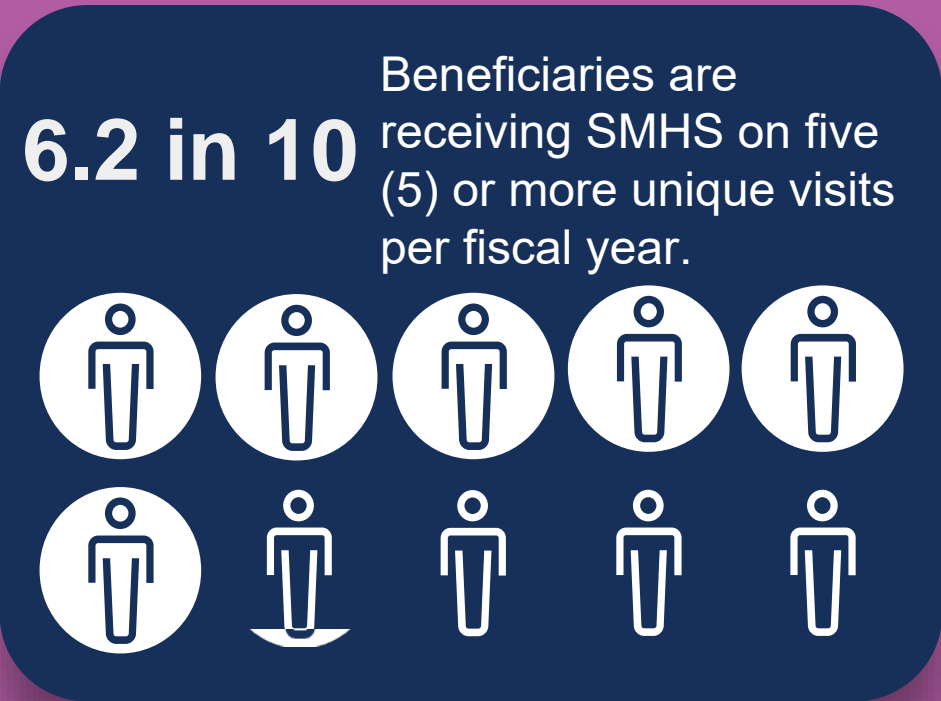
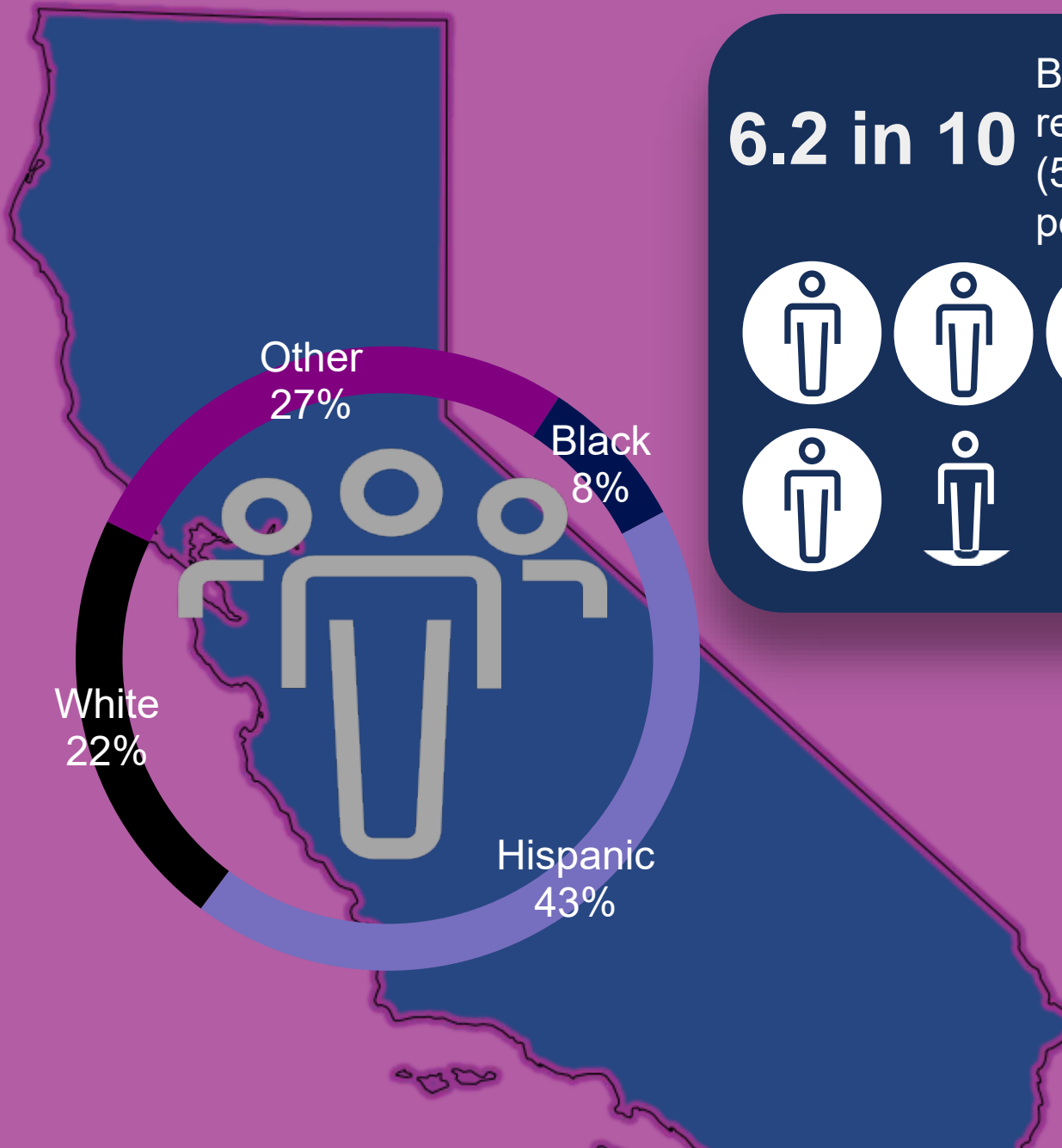
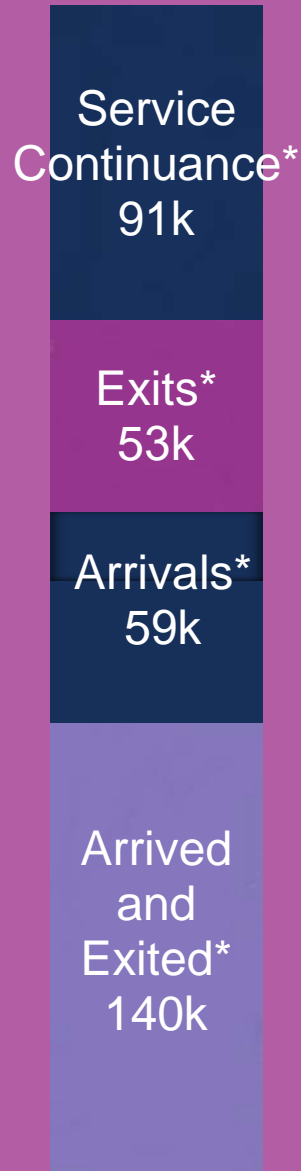


# CA Specialty Mental Health Services (SMHS) At-A-Glance Adults 21 and Over, FY 18-19

# 342,994

Total Medi-Cal Beneficiaries Served in the DHCS SMHS system



## Top 5 Mental Illness Diagnosis Categories Among Adults Receiving SMHS:

1. Major depressive disorder, recurrent
2. Bipolar disorder
3. Schizoaffective disorders
4. Schizophrenia
5. Reaction to severe stress, and adjustment disorders

\*Please visit the [Performance Outcomes System Measures Catalog](#) for definitions on Arrivals, Exits, and Service Continuance on page 35.

Want access to more data? [Visit the Open Data Portal for:](#)

- Additional Fiscal Years
- County level data
- Groups by Age & Sex
- And more!